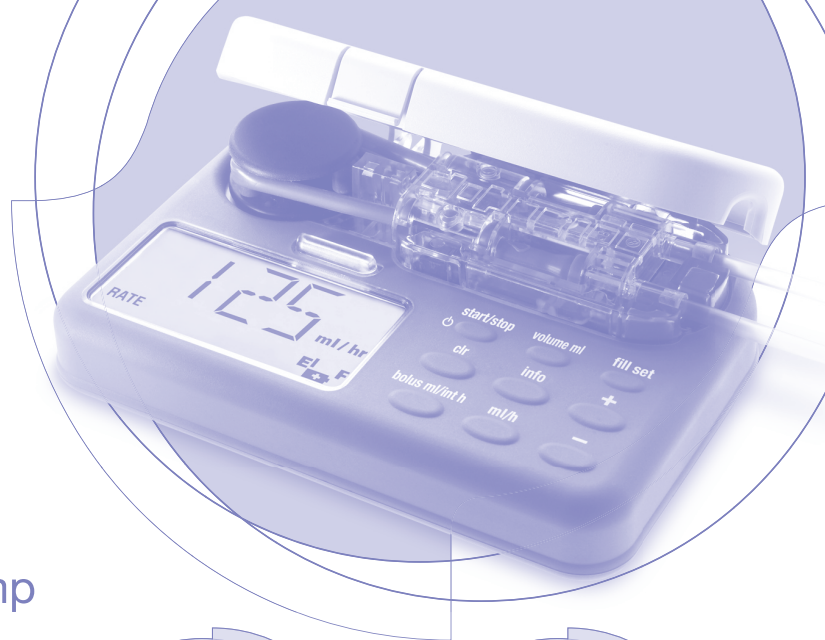
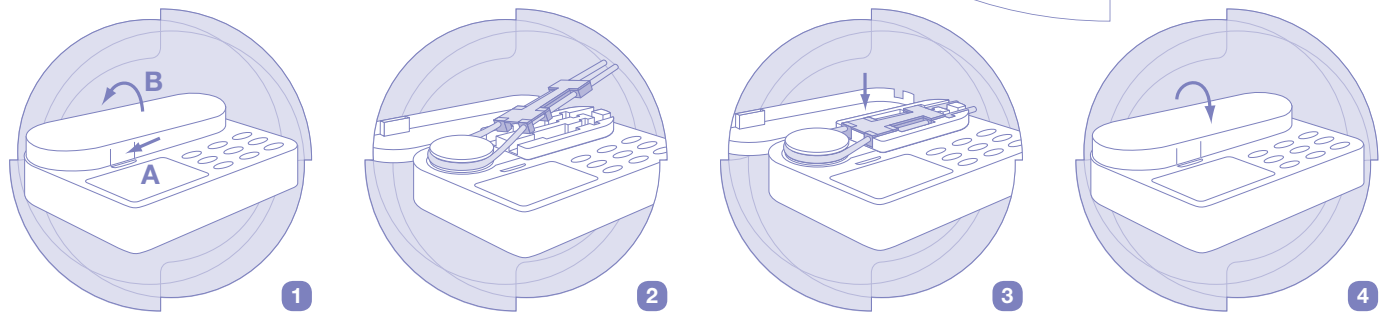


Flocare Infinity+ Short Manual



Preparation and start of the pump



- 1 > Open the pump door by pressing up on the lower wall (A) and rotating the door upwards (B) at the same time (fig. 1).
- 2 > Position the looped section of the silicone tubing around the rotor (fig. 2).
- 3 > Stretch slightly to seat the cassette into the pump (fig. 3).
- 4 > Close the pump door (fig. 4).
- 5 > The pump is now ready to be switched on.

Operating instructions

Clearing pump memory and priming the feeding set

- power** > When switching the pump on or off, press this key for 2 seconds.
- clr** > Pressing this key will clear the pump memory.
- fill set** > Pressing this key for 2 seconds will automatically prime the feeding set.
- > Connect the feeding set with the feeding tube and choose appropriate feeding program **1**, **2** or **3**.

- 1 Continuous feeding
ml/h > **+** 400 ml/h > **-** 1 ml/h > **start/stop**
- 2 Continuous feeding and pre-set dose
ml/h > **+** 400 ml/h > **-** 1 ml/h > **volume ml** > **+** 4000 ml > **-** 1 ml > **start/stop**
- 3 Bolus feeding
bolus ml/int h > **+** 500 ml > **-** 1 ml > **bolus ml/int h** > **+** 12.00 h > **-** 0.30 h > **ml/h** > **+** high (600 ml/hr) > **-** low (400 ml/h)
 > **volume ml** > **+** 4000 ml > **-** 1 ml > **start/stop**

Flocare Infinity+

Problem solving instructions



Error messages and instructions

Please refer to detailed Instructions for Use for additional information

Problem	Instructions
NO SET	> Press start/stop to switch off the pump > Insert the Flocare® Infinity™ set into the pump following instructions for use > Restart the pump.
PUSH STRT	> The pump has been untouched in hold mode for over 3 minutes > Extend the hold mode by a further 3 minutes by pressing start/stop > Program the pump and press start/stop to start the pump.
END OF DOSE	> The programmed dose / volume has been administered > Switch off the pump by pressing start/stop for 2 seconds > Clear the memory by pressing clr .
PROG	> No flow rate is installed > Make sure the correct flow rate is programmed.
DOOR	> The door is not correctly closed > Make sure the door is properly closed prior to starting a feeding program.
AIR	> Check if the set is inserted correctly and check the air sensor > Remove the air in the set by using fill set key.
BATT	> Connect the adaptor to the pump and mains and charge the pump for approx. 6 hours. During charging the pump can be used.
BATT E + F	> Battery failure > Please refer the pump for service.
OCC IN OCC OUT	> Press start/stop > Check the feeding set (IN) or feeding tube (OUT) for blockages > Reinsert the set and start the pump, if necessary clean the sensors.
OCC OUT (repeated)	> Stop the pump by pressing the start/stop > Let it run briefly by repressing the start/stop key > Stop the pump again with start/stop key, ensuring there has been no OCC OUT alarm > Remove the set from the pump and reinsert it into the pump > Restart the pump by pressing start/stop .
LOCK	> The programming feature is blocked in the set-up mode of the pump > Refer to instruction booklet to de-block.
ER01 - ER99	> Electronic error > Switch the pump off, make sure the pump door is closed and turn the pump back on > If the error persists, please refer the pump for service.
NO PLUG SYMBOL (while the pump is connected to the mains)	> The wall outlet or the adaptor does not work > Connect to another wall outlet > If there is still no symbol, request replacement of the adaptor.